



## THE AUGUSTA at NOCATEE

THE COASTAL

**4,135 ft<sup>2</sup> - 5 Bedrooms - 4 Bathrooms - 3 Car Garage**

This stunning home offers comfort and elegance at every turn. The first floor boasts a magnificent owner's suite complete with soaking tub, walk-in shower and an enormous walk-in closet. The gourmet kitchen is flanked by a sunny nook that leads out to the covered lanai. Centered by a two-story gathering room, there is space for everyone in this grand home!

**\$2,621**  
ESTIMATED SAVINGS



This home has a HERS Score of 56 and is estimated to save you \$2,621 on your annual utility bills vs. a resale home.

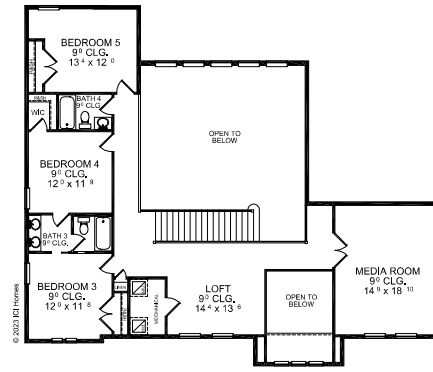
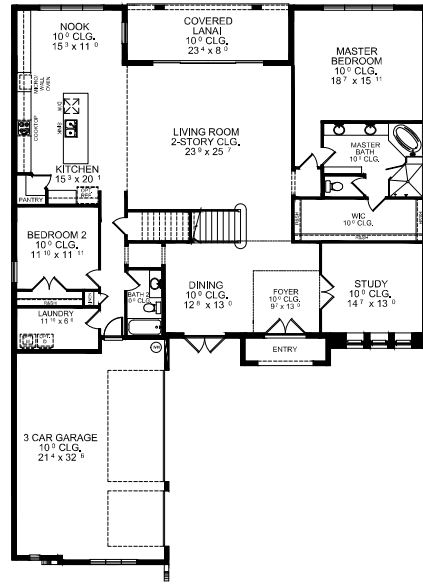
# AUGUSTA #4136

5 Bedrooms - 4 Bathrooms - 3 Car Garage

**Nocatee** Available in...  
 Ponte Vedra, FL The Coral Ridge 70' Series  
 904.533.5985

**Total Living Area** 4,135 ft<sup>2</sup>  
**Total Under Roof** 4,878 ft<sup>2</sup>

## Additional Elevations



## Customize this plan, it's easy. See a Sales Associate or visit [ICIHomes.com](http://ICIHomes.com).

©1994-2023: ICI Homes is a trade name of Intervest Construction, Inc., whose divisions operate under CBC057851, CBC1256683, CBC1257263, CBC1261237, CBC1262114, CBC1262120, CBC1264300, CBC1264814, CBC1265743, CRC1329858, CRC1332864, CRC1333091. Features listed on this sheet may be plan/community specific and may vary from description; please consult an ICI Sales Representative for specific feature information. All new ICI Homes come with a HBW 2-10 warranty. Certain elevations may have additional fees. Prices may not include lot premiums, upgrades, and options. Inventory home completion date may vary. Depending on construction stage, options may not be available at time of contract. All prices are subject to change without notice. All plans are the property of ICI Homes and cannot be copied or used without permission. Prices, promotions, incentives, features, options, amenities, floor plans, elevations, site maps, designs, materials, and dimensions are for illustrative purposes only and subject to change without notice. Renderings and floor plans are conceptual and for the convenience of reference only. They should not be relied upon as representation express or implied of final sizes, locations, features or dimensions. Square footage and dimensions are estimated and may vary from description. All HERS ratings and savings are calculated by a third party energy rating service. Actual savings will depend on a number of factors, including but not limited to daily activities, home maintenance practices, household size, use of appliances, lighting and internal climate control systems, lot orientation, and the surrounding climate and weather conditions.  
 Garage Orientation R / L: \_\_\_\_\_ Created on 01/25/2023.



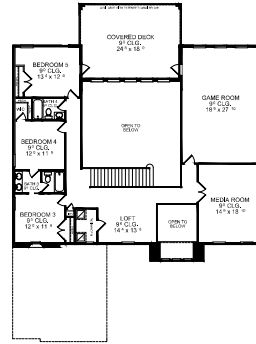
# AUGUSTA #4136

5 Bedrooms - 4 Bathrooms - 3 Car Garage

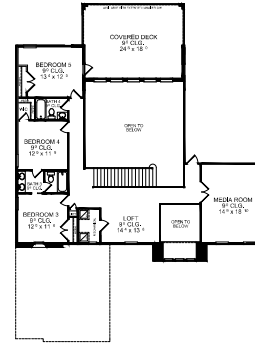
**Nocatee** Available in...  
 Ponte Vedra, FL The Coral Ridge 70' Series  
 904.533.5985

**Total Living Area** 4,135 ft<sup>2</sup>  
**Total Under Roof** 4,878 ft<sup>2</sup>

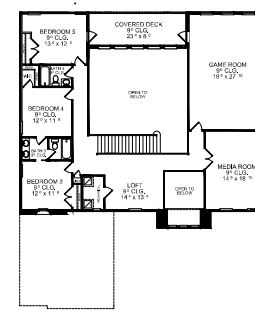
## Additional Elevations



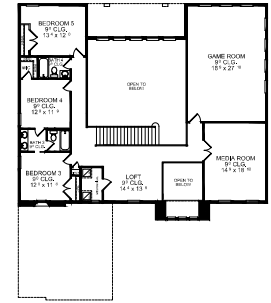
s2440cr598r488  
 Living: 552 ft<sup>2</sup> | Under Roof: 433 ft<sup>2</sup>



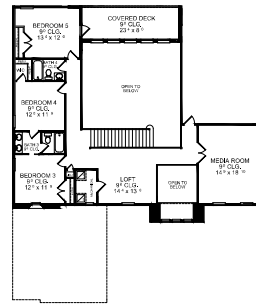
s2440cr599



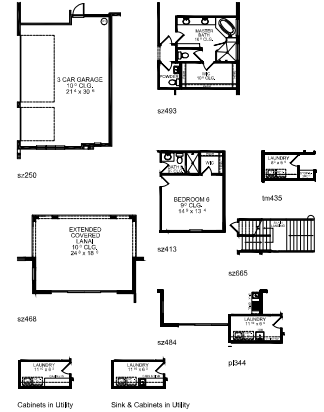
s2440s210  
 Living: 552 ft<sup>2</sup> | Under Roof: 196 ft<sup>2</sup>



s2440  
 Sqft: 552 ft<sup>2</sup>



s2510



## Customize this plan, it's easy. See a Sales Associate or visit ICIHomes.com.

©1994-2023. ICI Homes is a trade name of Interwest Construction, Inc., whose divisions operate under CBC057851, CBC1256683, CBC1257263, CBC1261237, CBC1262114, CBC1262120, CBC1264300, CBC1264814, CBC1265743, CRC1329858, CRC1332864, CRC1333091. Features listed on this sheet may be plan/community specific and may vary from description; please consult an ICI Sales Representative for specific feature information. All new ICI Homes come with a HBW 2-10 warranty. Certain elevations may have additional fees. Prices may not include lot premiums, upgrades, and options. Inventory home completion date may vary. Depending on construction stage, options may not be available at time of contract. All prices are subject to change without notice. All plans are the property of ICI Homes and cannot be copied or used without permission. Prices, promotions, incentives, features, options, amenities, floor plans, elevations, site maps, designs, materials, and dimensions are for illustrative purposes only and subject to change without notice. Renderings and floor plans are conceptual and for the convenience of reference only. They should not be relied upon as representation express or implied of final sizes, locations, features or dimensions. Square footage and dimensions are estimated and may vary from description. All HERS ratings and savings are calculated by a third party energy rating service. Actual savings will depend on a number of factors, including but not limited to daily activities, home maintenance practices, household size, use of appliances, lighting and internal climate control systems, lot orientation, and the surrounding climate and weather conditions.  
 Garage Orientation R / L: \_\_\_\_\_ Created on 01/25/2023.

