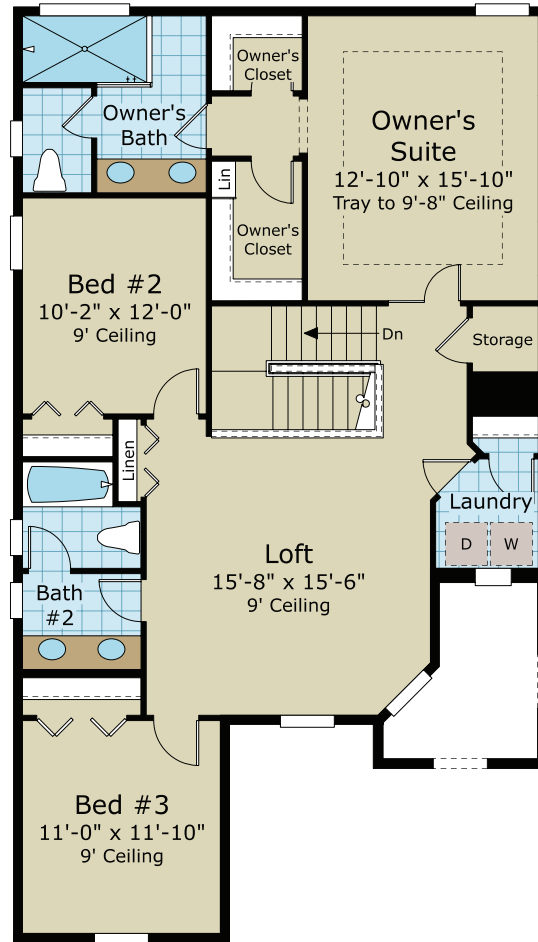
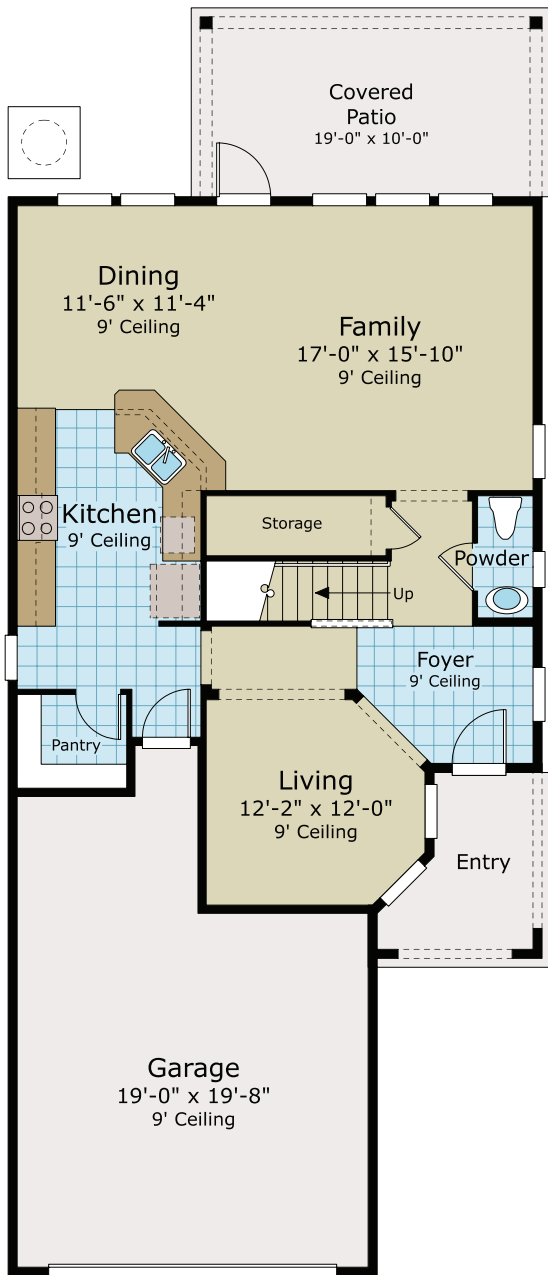




MODERN COASTAL ELEVATION #3

THE JUNIPER

FROM THE ASPIRATION COLLECTION
AT REFLECTIONS



KEY WEST ELEVATION #4



CARIBBEAN ELEVATION #3



CAPE COD ELEVATION #7

3 BEDROOMS, 2 ½ BATHS, LOFT, LIVING, AND 2-CAR GARAGE
LIVING AREA: 2,263 SQ. FT.



Illustrations are artists concepts. Actual colors may vary from what is seen on brochure. Dimensions and square footage are approximate. Builder reserves the right to modify floor plans, elevations, colors and materials without notice. Actual areas may vary with construction. Certain items shown are for conception only and may not be included as standard. See standard features for more information. Floor plan shown is for the Modern Coastal Elevation; other elevations may vary floor plan slightly. Marketed Exclusively by Providence Realty LLC. NOT TO SCALE. © Copyright 2022 Providence Homes, Inc. - ALL RIGHTS RESERVED. CGC053640. 04.05.2024