

TOCOI



◆ **MASTERCRAFT.** ◆
BUILDER GROUP



TOCOI COASTAL



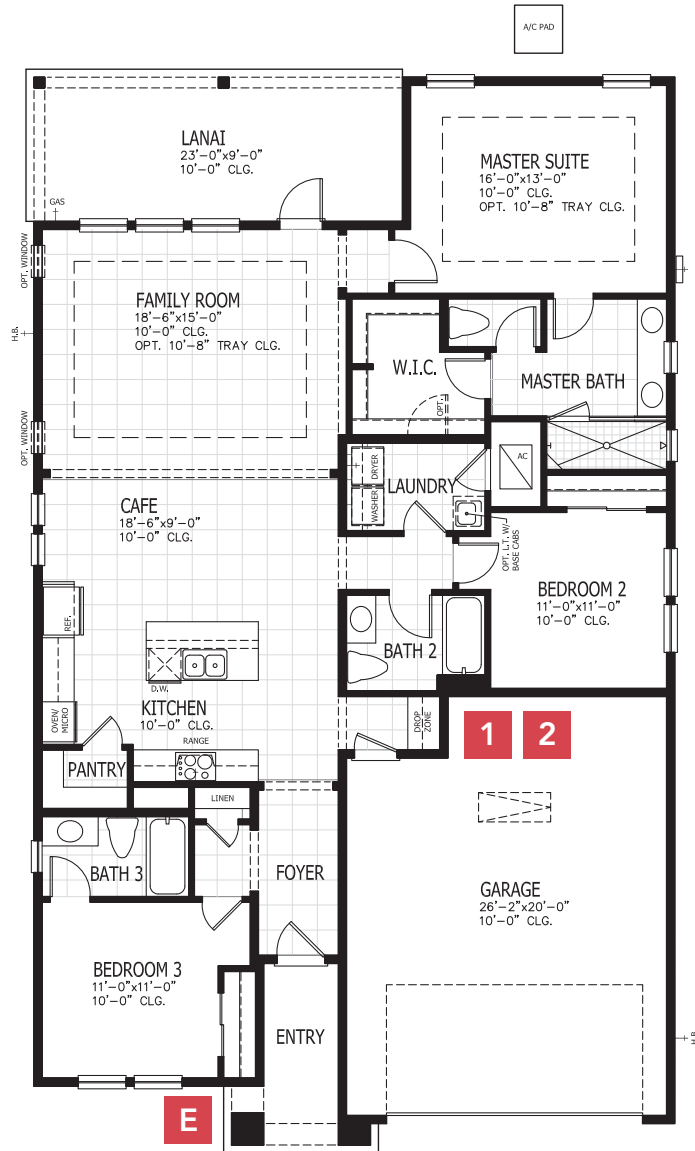
TOCOI CRAFTSMAN



TOCOI FARMHOUSE

TOCOI COASTAL

FIRST FLOOR

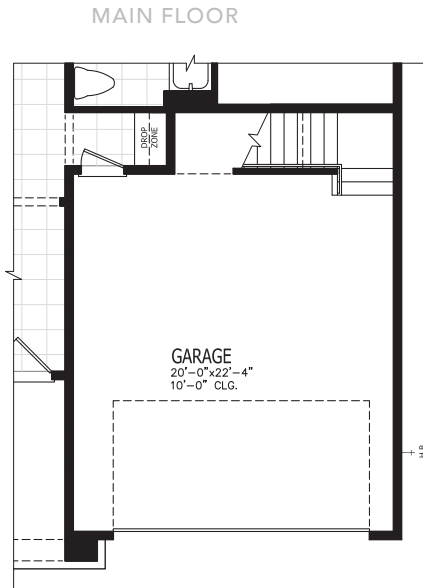


3-4 BEDROOMS	3-4 BATHROOMS
2 CAR GARAGE	1,799-2,193 SQUARE FEET

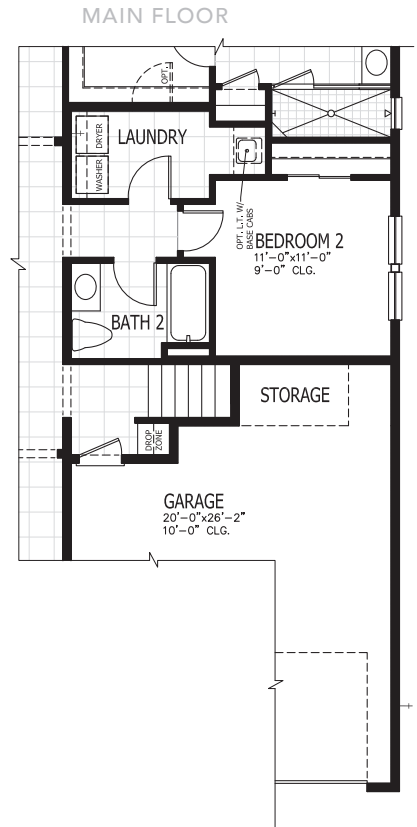
In the interest of continuous product improvements and to meet changing market conditions, MasterCraft Builder Group reserves the right to modify floor plans, exterior elevations, specifications, features, prices and product types without prior notice or obligation. Some features may vary from plan to plan. All plans, elevation renderings, and artist's conceptions are not necessarily to scale. All square footages are approximate. Window size, type and location may vary with each elevation. 05/27/2021

TOCOI FLOOR PLAN OPTIONS

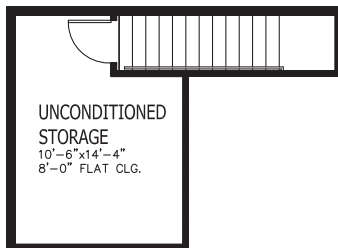
1 ATTIC STORAGE



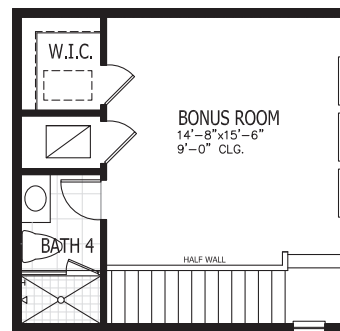
2 BONUS ROOM



ATTIC

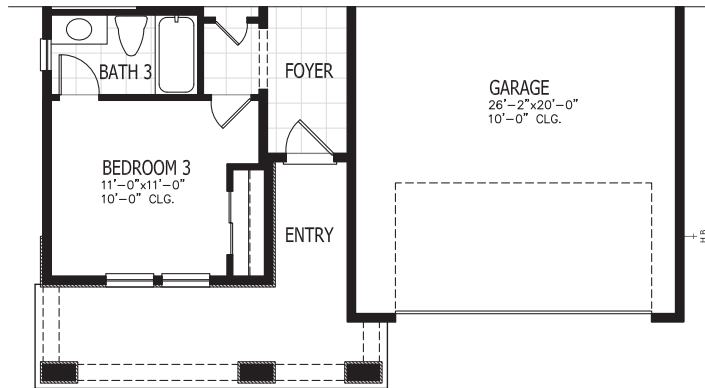


UPPER FLOOR



TOCOI OTHER ELEVATIONS

E CRAFTSMAN



E FARMHOUSE

