

NICHOLAS



◆ MASTERCRAFT ◆
BUILDER GROUP



NICHOLAS COASTAL



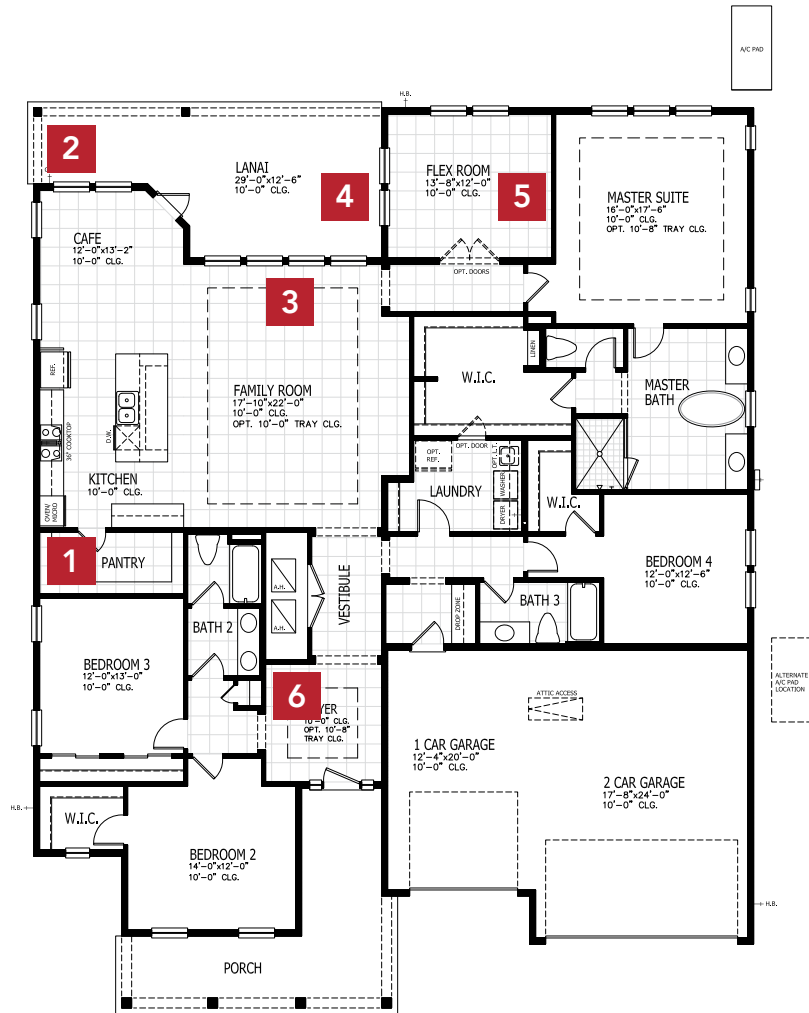
NICHOLAS CRAFTSMAN



NICHOLAS FARMHOUSE

NICHOLAS COASTAL

FIRST FLOOR



4-5 BEDROOMS

3-4.5 BATHROOMS

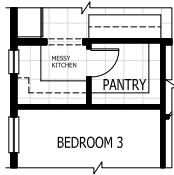
3 CAR GARAGE

2987-3746 SQUARE FEET

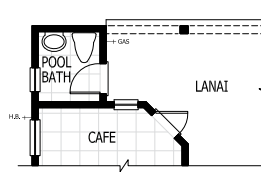
In the interest of continuous product improvements and to meet changing market conditions, MasterCraft Builder Group reserves the right to modify floor plans, exterior elevations, specifications, features, prices and product types without prior notice or obligation. Some features may vary from plan to plan. All plans, elevation renderings, and artist's conceptions are not necessarily to scale. All square footages are approximate. Window size, type and location may vary with each elevation. 06/01/2022

NICHOLAS FLOOR PLAN OPTIONS

1 MESSY KITCHEN

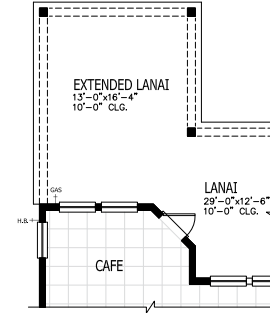


2 POOL BATHROOM

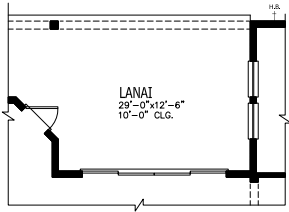


ADDS 39 SQUARE FEET

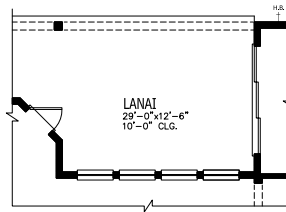
2 EXTENDED LANAI



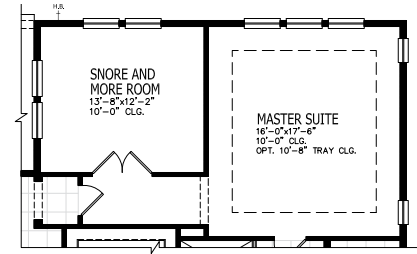
3 SLIDING DOOR TO FAMILY ROOM



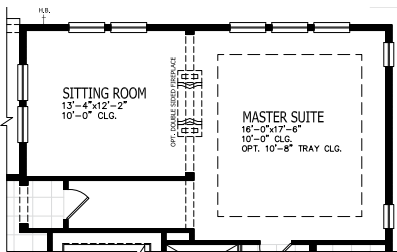
4 SLIDING DOOR TO FLEX ROOM



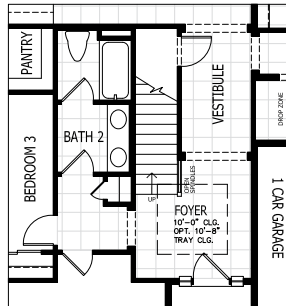
5 SNORE & MORE ROOM



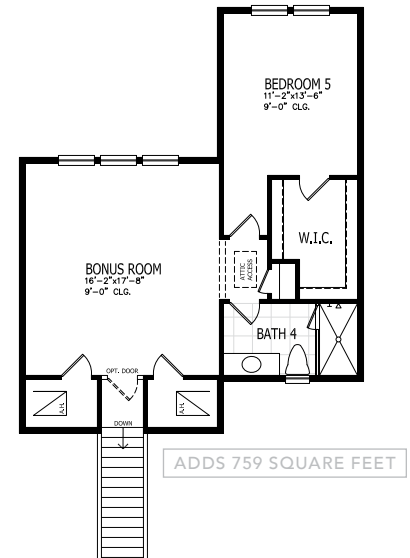
5 SITTING ROOM



6 BONUS ROOM STAIRS



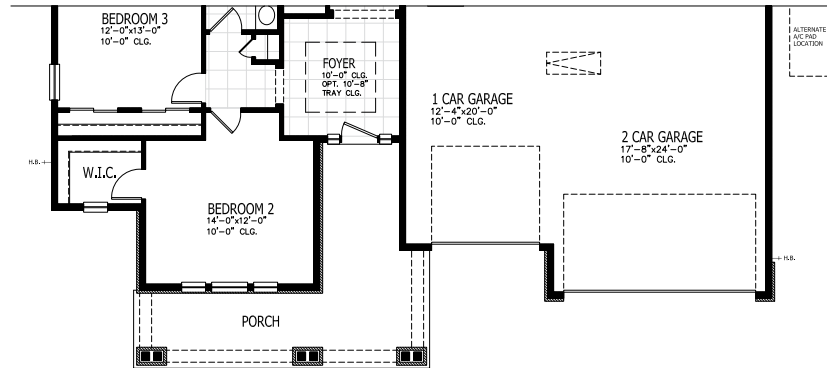
6 SECOND FLOOR BONUS ROOM



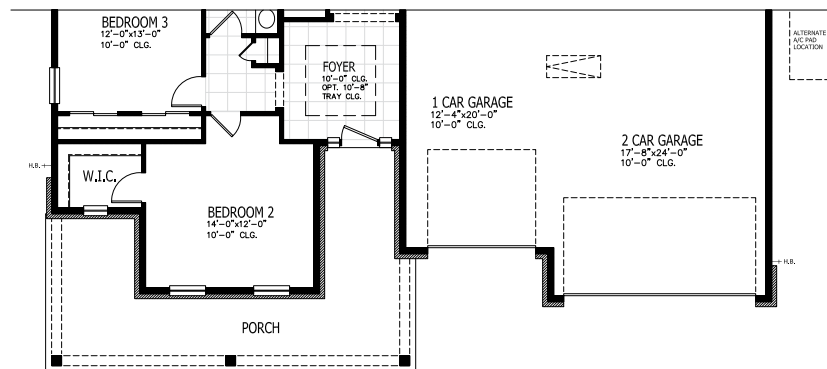
ADDS 759 SQUARE FEET

NICHOLAS OTHER ELEVATIONS

E CRAFTSMAN



E FARMHOUSE



◆ **MASTERCRAFT** ◆
BUILDER GROUP