

# KASIE



◆ **MASTERCRAFT.** ◆  
BUILDER GROUP



KASIE COASTAL



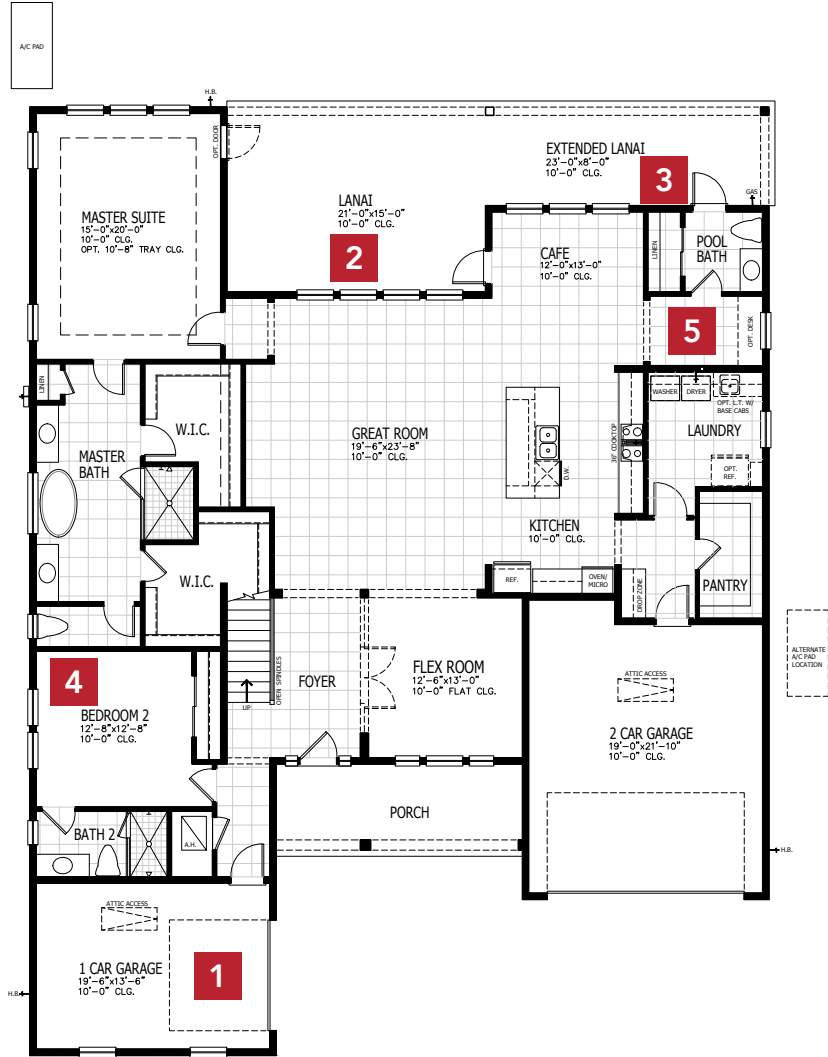
KASIE CRAFTSMAN



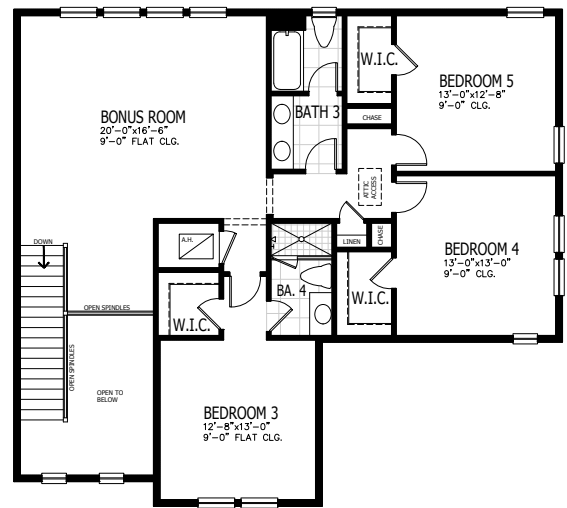
KASIE FARMHOUSE

# KASIE COASTAL

## FIRST FLOOR



## SECOND FLOOR

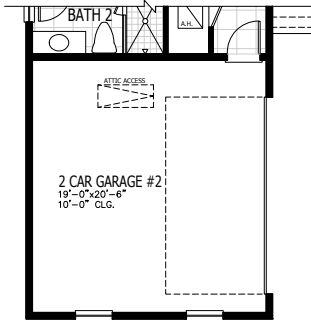


<b>5 BEDROOMS</b>	<b>4-4.5 BATHROOMS</b>
<b>3-4 CAR GARAGE</b>	<b>3996-4186 SQUARE FEET</b>

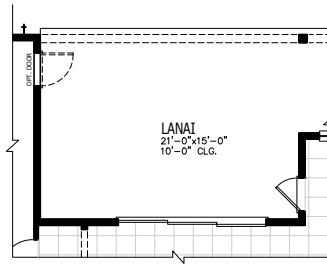
In the interest of continuous product improvements and to meet changing market conditions, MasterCraft Builder Group reserves the right to modify floor plans, exterior elevations, specifications, features, prices and product types without prior notice or obligation. Some features may vary from plan to plan. All plans, elevation renderings, and artist's conceptions are not necessarily to scale. All square footages are approximate. Window size, type and location may vary with each elevation. 06/01/2022

# KASIE FLOOR PLAN OPTIONS

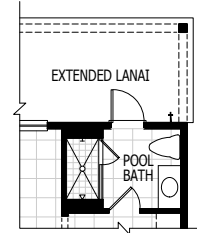
## 1 4 CAR GARAGE



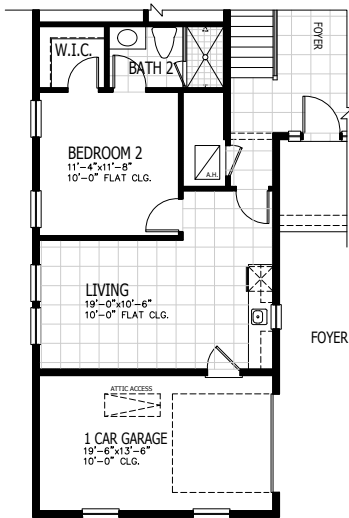
## 2 SLIDING GLASS DOOR



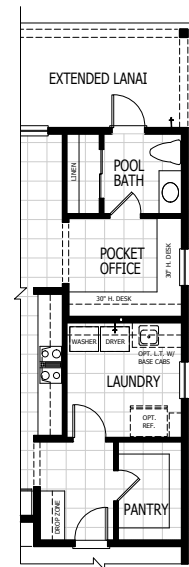
## 3 SHOWER AT POOL BATH



## 4 MULTI-GENERATIONAL SUITE



## 5 POCKET OFFICE

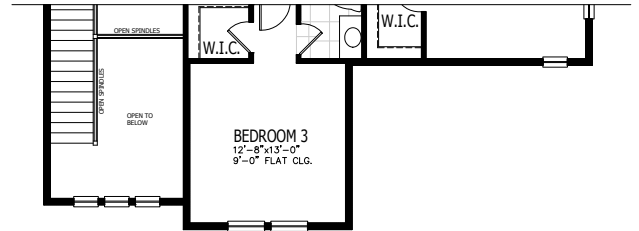
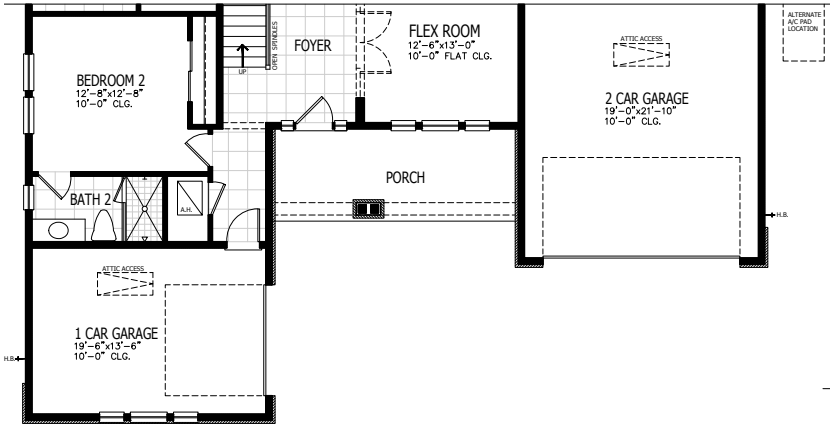


ADDS 190 SQUARE FEET

# KASIE OTHER ELEVATIONS

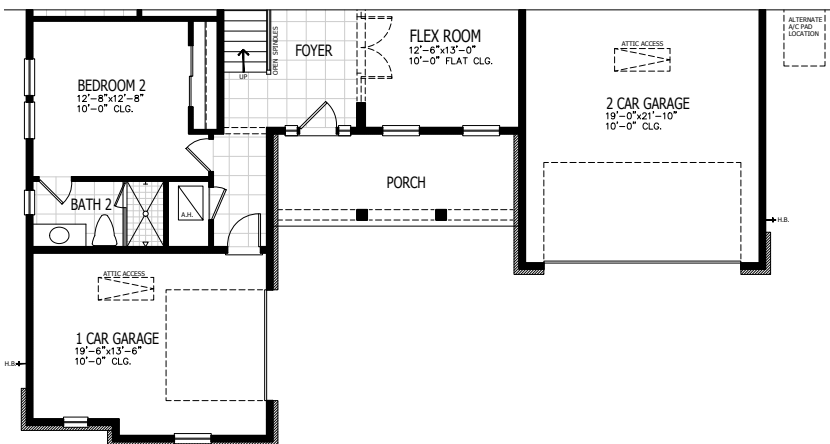
## E CRAFTSMAN

## UPPER FLOOR



## E FARMHOUSE

## UPPER FLOOR



◆ **MASTERCRAFT** ◆  
BUILDER GROUP