

HARPER



◆ **MASTERCRAFT** ◆
BUILDER GROUP



HARPER COASTAL



HARPER CRAFTSMAN

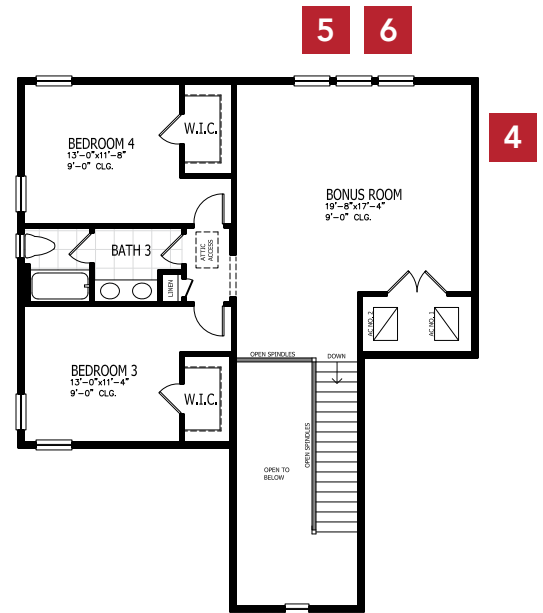
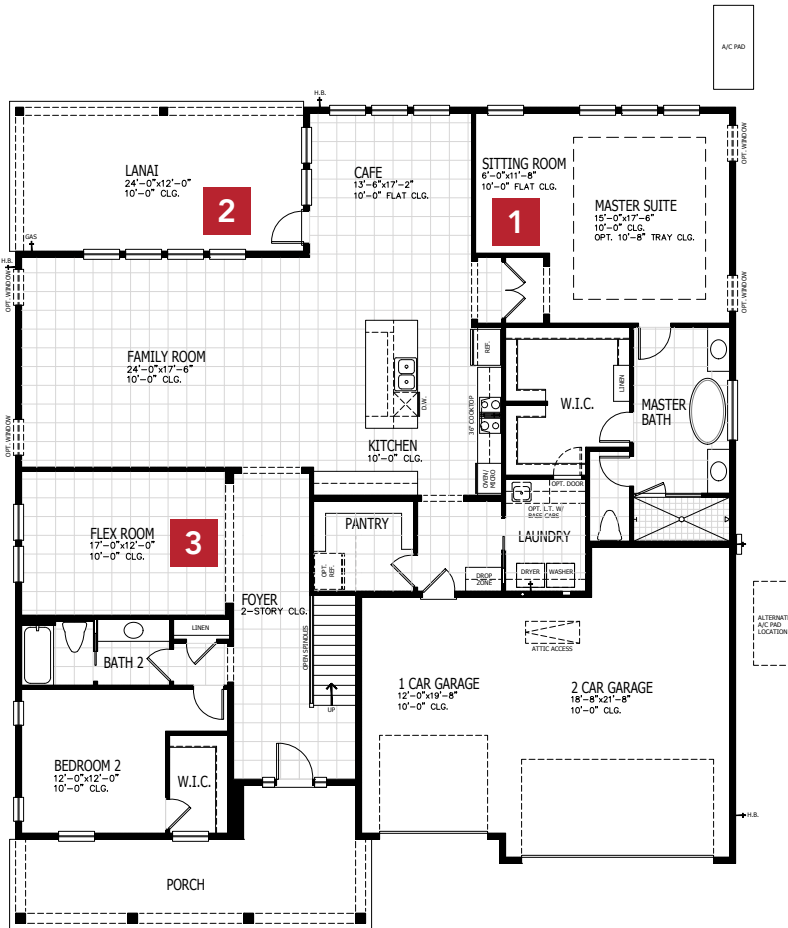


HARPER FARMHOUSE

HARPER COASTAL

FIRST FLOOR

SECOND FLOOR



4-6 BEDROOMS

3-4.5 BATHROOMS

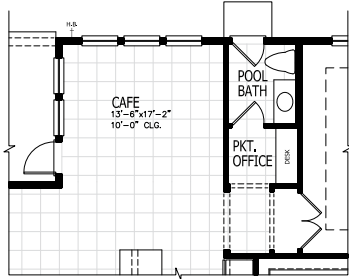
3 CAR GARAGE

3679-4227 SQUARE FEET

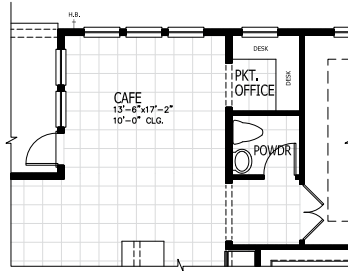
In the interest of continuous product improvements and to meet changing market conditions, MasterCraft Builder Group reserves the right to modify floor plans, exterior elevations, specifications, features, prices and product types without prior notice or obligation. Some features may vary from plan to plan. All plans, elevation renderings, and artist's conceptions are not necessarily to scale. All square footages are approximate. Window size, type and location may vary with each elevation. 06/01/2022

HARPER FLOOR PLAN OPTIONS

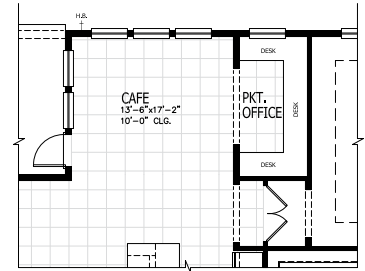
1 POOL BATH AND POCKET OFFICE



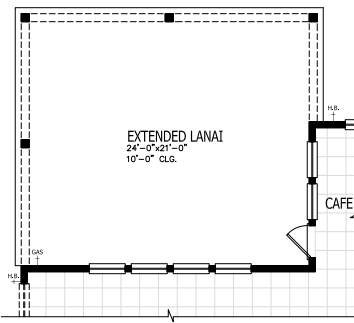
1 POCKET OFFICE WITH POWDER ROOM



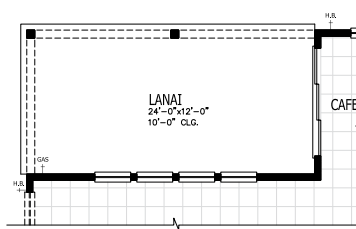
1 POCKET OFFICE



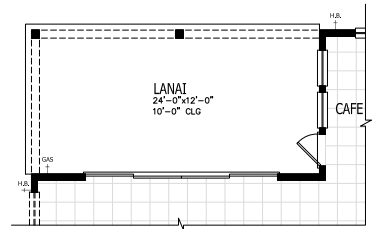
2 EXTENDED LANAI



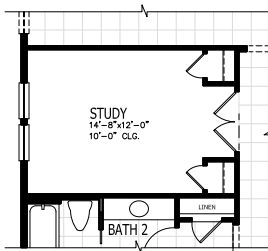
2 SLIDING DOOR TO CAFE



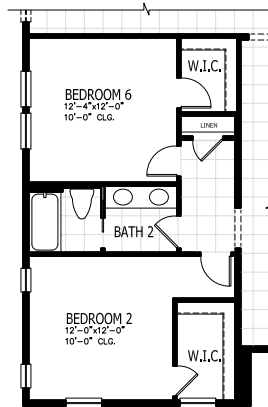
2 SLIDING DOOR TO FAMILY ROOM



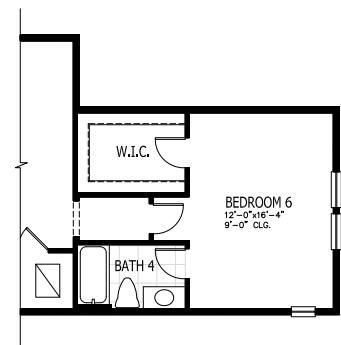
3 STUDY



3 BEDROOM 6

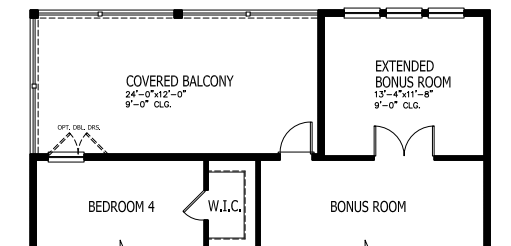


4 BEDROOM 6 & BATHROOM 4



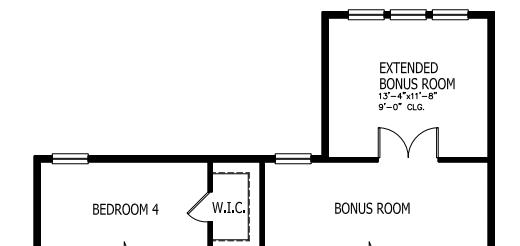
ADDS 376 SQUARE FEET

5 EXTENDED BONUS ROOM WITH COVERED BALCONY



ADDS 172 SQUARE FEET

6 EXTENDED BONUS ROOM

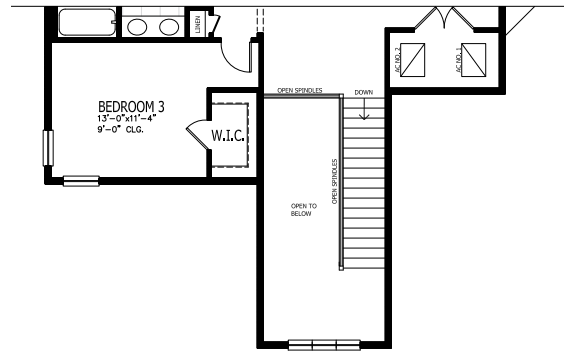
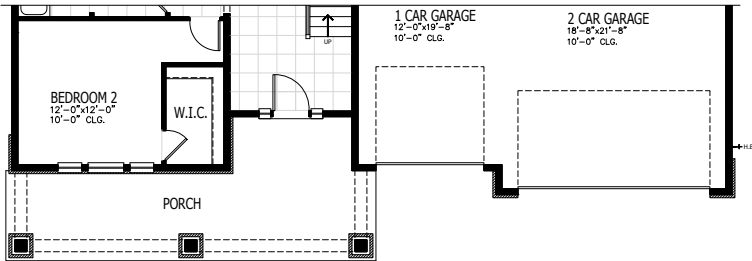


ADDS 172 SQUARE FEET

HARPER OTHER ELEVATIONS

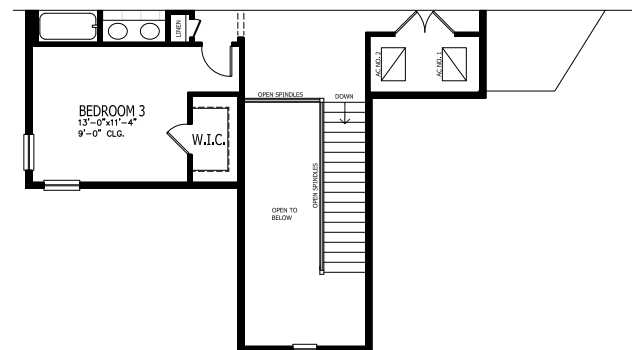
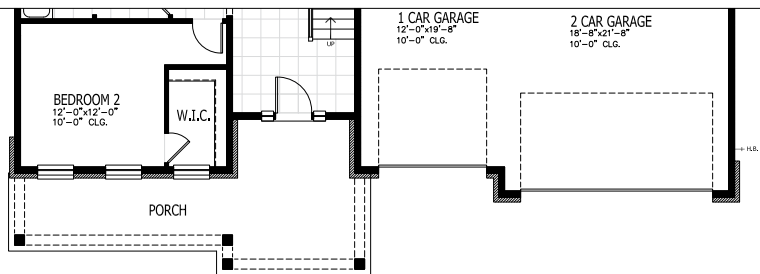
E CRAFTSMAN

SECOND FLOOR



E FARMHOUSE

SECOND FLOOR



◆ **MASTERCRAFT** ◆
BUILDER GROUP